

# **QubeMaster Xpress 2 DCP Creation Software**

## *Installation and Activation Guide*

## Installation Procedure

---

QubeMaster Xpress can be installed on any windows pc with a minimum system configuration of:

- Intel dual-core processor (or better)
- 4GB RAM (minimum)
- Windows XP SP3 or Windows 7 Ultimate (32 or 64 bit)

- 1) Download the “zipped” folder “**QubeMasterXpress.2.0.1.0.zip**”
- 2) Right-click on the file and select “Extract All” to extract the contents to a folder anywhere on the local system drive
- 3) Double-click “Setup.exe”
- 4) Allow the different prerequisite components to be installed sequentially by clicking the “continue” and “exit” buttons when prompted.
- 5) Please do not download and install any later/different versions of any of these components directly from the internet. Only install the versions available in the downloaded zipped folder.

## Software Activation

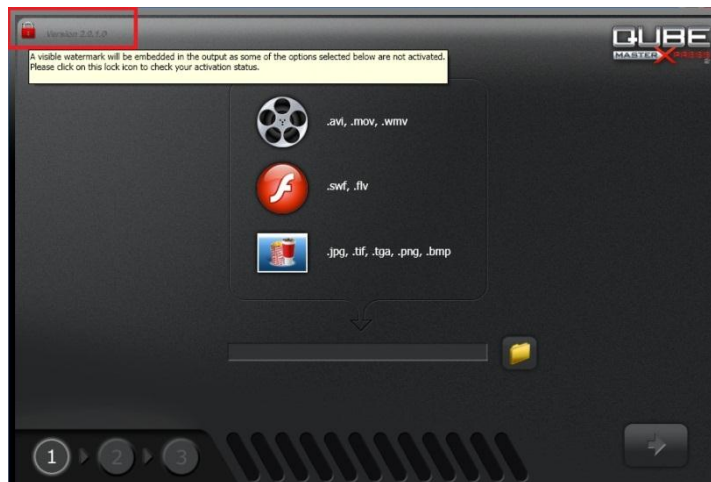
---

The downloaded version of QubeMaster Xpress 2 is a fully functional demo version, with the only limitation being a watermark on the encoded image. This watermark can be removed by activating the software using a valid serial number, available on purchase through the QubeCinema.com website.

On receipt of a serial number please follow the steps below to activate the software:

### QubeMaster Xpress 2 – Product Activation

- 1) Ensure an active internet connection
- 2) Click on the “red lock” icon on the top-left corner of the QubeMaster Xpress UI.



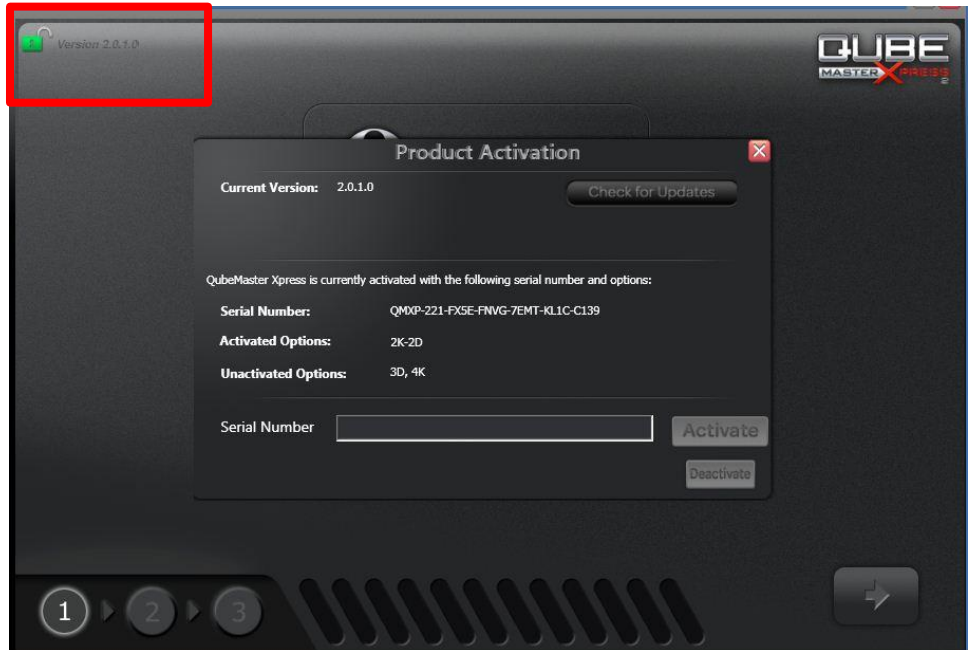
3) Enter the serial number into the field provided



4) Click the “ACTIVATE” button.

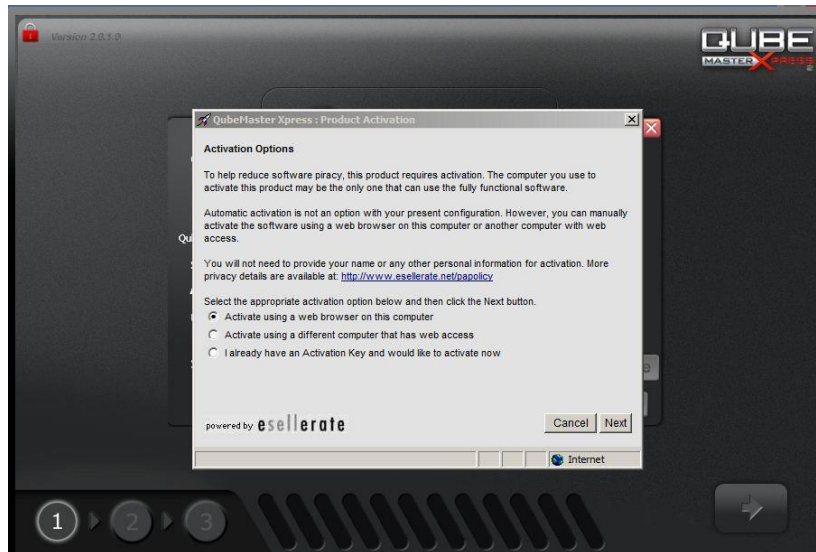


- 5) When QubeMaster Xpress 2 is successfully activated on the computer you will see a green, un-locked icon on the top left of the screen and details of the Serial number and activated options in the activation page.



When an active internet connection is not available you may choose to activate QubeMasterXpress 2 via a manual activation procedure. The steps are as follows:

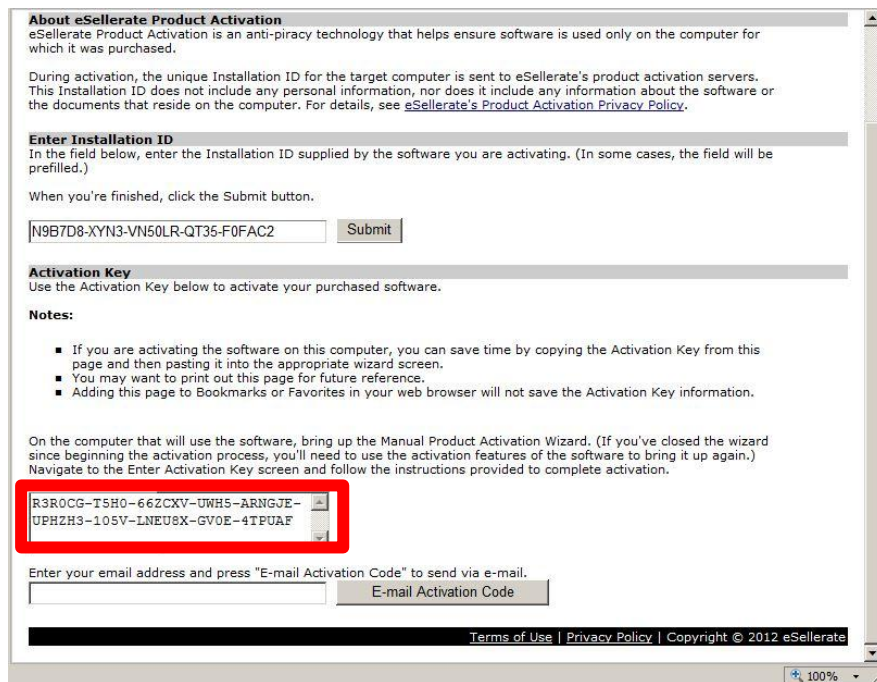
- 1) Select the “Activate using a web browser on a different computer” and click “Next”



- 2) The software “pre-fills” a code, click the “SUBMIT” button



- 3) An Activation code will be displayed in the box. Copy this code into the "Activation" page of QubeMaster Xpress 2.



### **QubeMaster Xpress 2 – Product De-Activation**

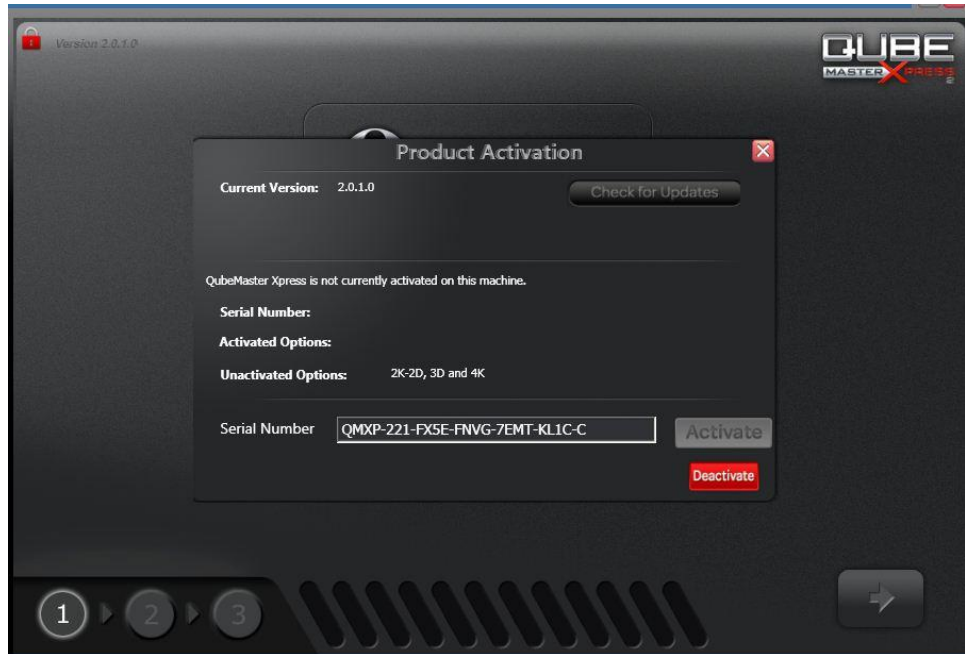
With a single license/serial number QubeMaster Xpress can be activated on only one machine at a time. To activate QubeMaster Xpress 2 on another computer, it must first be De-Activated on the currently installed system. To De-Activate a license, follow the steps below:

- 1) Ensure an active internet connection
- 2) Click on the “green lock” icon on the top-left corner of the QubeMaster Xpress UI.





- 3) Enter the original serial number that was received on purchase of the software, and click the “DEACTIVATE” button



- 4) When the software is successfully de-activated the “red lock” icon replaces the “green un-locked” icon.
- 5) Now this serial number may be used to activate on the other computer.